

S.W. 1/4
SECTION 20, T.7N., R.1W., S.L.B. & M.

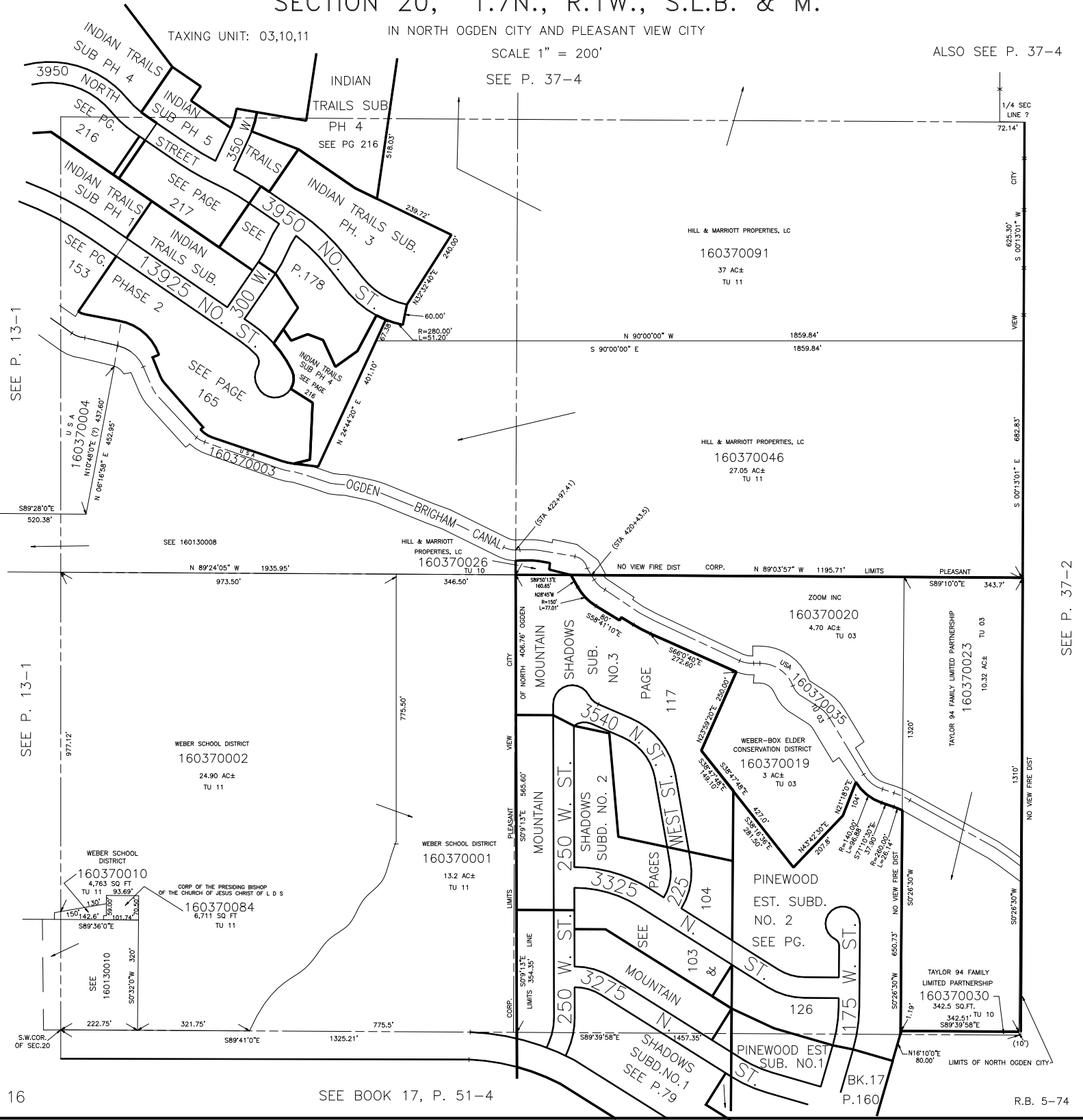
TAXING UNIT: 03,10,11

IN NORTH OGDEN CITY AND PLEASANT VIEW CITY

SCALE 1" = 200'

SEE P. 37-4

ALSO SEE P. 37-4



SEE P. 13-1

SEE P. 13-1

SEE P. 37-2